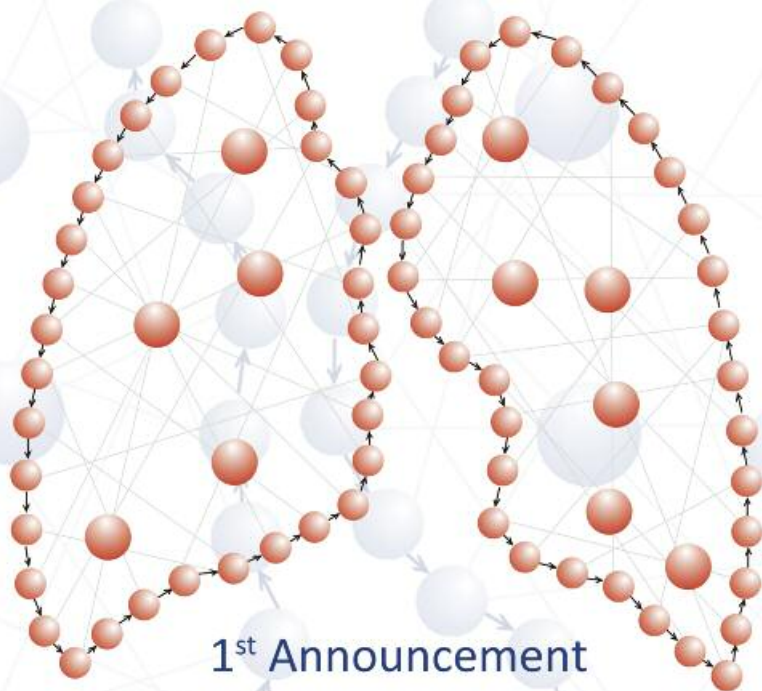


Organized by: Oncology Center of Biomedical Education and Research
Oncology Unit GPP, Athens School of Medicine

3rd LUNG CANCER Network

«From the Bench to the Bedside»



1st Announcement

31st JANUARY - 1st FEBRUARY 2014
Hilton Athens Hotel, Athens, Greece

Accreditation from:
European Society for Medical Oncology (ESMO)
Panhellenic Medical Society

Under the auspice of:

Invitation Letter

The recent, increasing amount of knowledge regarding lung cancer, especially in the field of basic science, holds promise for personalized treatment of these patients that would provide more effective and less toxic therapeutic approaches, improving the prognosis of the patients with thoracic malignancies. On the other hand, the immense bulk and the rapid recycling of the new information makes difficult its understanding, evaluation and interpretation by the clinicians. Therefore, the “translation” of our recently acquired knowledge from the lab bench to the bedside is neither smooth nor is it without obstructions, due to the existing “gaps” in our understanding and the often contradictory “signals” from clinical trials.

The success of our two previous meetings has prompted us to organize the **3rd Lung Cancer Network: “From the Bench to the Bedside”**. Our aim is to narrow the distance between the bench lab and the patient’s bed, between the clinical trials outcome and the routine practice, by bringing together basic scientists, clinical researchers and lung cancer specialists. Our multidisciplinary, international faculty will present the latest clinical data and provide treating physicians with practical information regarding the clinical significance of the histological, molecular and genetic profile of the tumor and how the implementation of targeted agents in the therapeutic algorithm changes the clinical practice of lung cancer patients.

Finally, we anticipate that our meeting, with the presence of our distinguished faculty, would provide the opportunity and motivation for discussions regarding the emerging therapies and set the pavement for the future research and strategies towards the personalized treatment of lung cancer patients.

We cordially welcome you all in Athens in January 31st & February 1st 2014 for a stimulating, innovative and educational meeting.

Learning Objectives

At the conclusion of our educational meeting, the participant will be able to:

- Recognize the clinical significance of molecular genotyping of lung cancer patients
- Understand the molecular pathways that hold promise for therapeutic intervention in lung cancer patients
- Discuss the optimal methodology of clinical trials in the era of translational research
- Recognize the importance of a multidisciplinary approach to the care lung cancer patients

Topics

- End points of translational research clinical trials
- Prognostic and predictive tumor markers
- The molecular pathology of non-smoker lung cancer patients
- Gender discrepancies in lung cancer
- NSCLC driver oncogenes
- EGFR mutation heterogeneity
- Newer generation TKIs inhibitors
- The Met, K-ras and mTOR/PI3K pathways

Target Audience

The meeting is designed for medical, radiation and surgical oncologists, pathologists, chest physicians, scientists, residents-in-training, fellows and other health care professionals interested in the basic and clinical research as well as in the management of thoracic cancers.

CME Accreditation - Auspice

The content of the meeting will be submitted for CME accreditation and we will request the auspice of ESMO, IASLC and ETOP.

The Chairs of the Meeting



Professor Kostas Syrigos



Professor Alex Adjei



Professor Rolf Stahel

Scientific Program

FRIDAY, January 31st

2014

15:30-16:00 Registrations

16:00-17:30 **Challenges for the pathologist and molecular biologist in the era of personalized medicine**

Chair: **Alex Adjei, Jean-Yves Douillard**

16:00-16:20 Optimal tissue acquisition and minimal requirements. **Keith Kerr**

16:20-16:40 The WHO classification on adenocarcinoma. **Elisabeth Brambilla**

16:40-17:00 Challenges of genome sequencing in lung cancer. **Antonio Marchetti**

17:00-17:30 Discussion

17:30-18:00 **Coffee Break**

18:00-20:00 **Lung cancer clinical trials in the era of translational research**

Chair: **Rolf Stahel, Kostas Syrigos**

18:00-18:20 Coordinating the pathology lab with the clinical practice. **Rafael Rosell**

18:20-18:40 Clinical trials endpoint: OS vs PFS. **Jean-Yves Douillard**

18:40-19:00 NSCLC prognostic and predictive markers. **David Rimm**

19:00-19:20 The evolving treatment landscape of NSCLC. **Alex Adjei**

19:20-19:40 Lessons learned from the therapy of lung cancer. **Adi Gazdar**

19:40-20:00 Discussion

20:00-20:15 **Opening Ceremony**

Chair: **Kostas Syrigos, Rolf Stahel**

Welcome addresses

Honorary award for their contribution to cancer patients.

Jean-Pierre Armand, Adi Gazdar

20:15-20:45 **Opening Lecture**

Early clinical development, a critical moment for drug success.

Jean-Pierre Armand

21:00 Welcome Reception

- 09:00-10:00 **Immunotherapy of lung cancer**
Chair: **Solange Peters, Martin Reck**
- 09:00-09:20 Advances in vaccines immunotherapy. **Johan Vansteenkiste**
- 09:20-09:40 Anti-PD-1/Anti-PDL-1 antibodies in NSCLC. **Luis Paz-Ares**
- 09:40-10:00 Discussion
-
- 10:00-11:00 **Targeting the neovasculature in adenocarcinomas**
Chair: **Giorgio Scagliotti, Johan Vansteenkiste**
- 10:00-10:20 The expanding role of bevacizumab. **Benjamin Besse**
- 10:20-10:40 Angiogenesis inhibition beyond bevasizumab. **Martin Reck**
- 10:40-11:00 Brain metastases as an emerging problem in NSCLC therapy. **Lucio Crino**
-
- 11:00-11:30 **Coffee Break**
- 11:30-13:00 **The EGFR pathway in lung cancer**
Chair: **Luis Paz-Ares, Roy Herbst**
- 11:30-11:50 Cetuximab in NSCLC: lessons for all. **Robert Pirker**
- 11:50-12:10 Current status of EGFR TKIs. **Filippo de Marinis**
- 12:10-12:20 Mechanisms of resistance to EGFR TKI and treatment strategies. **Rolf Stahel**
- 12:20-12:40 Targeting HER2 and BRAF. **Solange Peters**
- 12:40-13:00 Discussion
-
- 13:00-14:00 **The EML4/ALK fusion protein**
Chair: **Adi Gazdar, Enriqueta Felip**
- 13:00-13:15 EML4/ALK and ROS-1 pathways. **Ruth Palmer**
- 13:15-13:30 Detection and monitoring of ALK-rearranged CTCs in ALK positive patients under treatment. **Francoise Farace**
- 13:30-13:45 Optimal therapeutic algorithm for patients with EML4-ALK-positive disease. **Giorgio Scagliotti**
- 13:45-14:00 Strategies to overcome crizotinib resistance. **Roy Herbst**
-
- 14:00-15:30 **Industry supported symposium by Roche**
-
- 15:30-16:30 **Break**
-
- 16:30-18:00 **Molecular biology of lung cancer**
Chair: **Rolf Stahel, Silvia Novello**
- 16:30-16:50 The clinical significance of circulating tumor cells. **Wilfried Eberhardt**
- 16:50-17:10 The clinical significance of the MET pathway. **Enriqueta Felip**
- 17:10-17:30 The clinical significance of the K-ras pathway in NSCLC. **Roy Herbst**
- 17:30-17:50 The clinical significance of the PI3K pathway in NSCLC. **Alex Adjei**
- 17:50-18:00 Discussion
-
- 18:00-18:30 **Coffee Break**
-
- 18:30-20:00 **Personalized treatment on lung cancer patients**
Chair: **Alex Adjei, Kostas Syrigos**
- 18:30-18:50 Squamous cell carcinomas. **Rafal Dziadziuszko**
- 18:50-19:10 Small cell lung cancer. **Andrea Ardizzoni**
- 19:10-19:20 Neuroendocrine tumors of the lung. **Kjell Oberg**
- 19:20-19:40 Gender discrepancies of lung cancer. **Silvia Novello**
- 19:40-20:00 Discussion
-
- 20:00 **Closing Ceremony**

Scientific Information

Audiovisual – Technical Support

The meeting room will be equipped with data video projectors, laser pointers etc, for power point presentations. Technical Support Center will be available outside the “Hesperides” Hall. Technical staff will assist with the presentations. All speakers are kindly requested to submit their presentation at least 1 hour prior to their scheduled presentation.

Language

The official language of the congress is English.

CME Accreditation - Auspice

The content of the meeting will be submitted for CME accreditation. Accreditation will be received from the European Society for Medical Oncology (ESMO) and the Panhellenic Medical Society. The meeting will request the auspice of ESMO, IASLC and ETOP.

Name badges

All registered participants will receive name badges, which they are kindly requested to wear at all times. Each badge will have a barcode for monitoring the hours of attendance.

Certificate of Attendance

All registered participants who have attended at least 60% of the total scientific program will receive a certificate of attendance from the Secretariat Desk after the closing ceremony.

Guidelines for writing and submitting the abstracts

The abstracts will be reprinted with direct reproduction from the original form, without any corrections.

Typing of the summary should be done electronically in Microsoft Word program, single-spaced, using the Calibri font and size 11, in English. The paper should not exceed 300 words.

Start typing by following closely the instructions below:

- In bold capital letters the title of the abstract
- The writers’ names, highlighting the name of the author presenting the paper. The first name’s initial should precede the last name
- The institutes to which the authors are employed
- The paper should include introduction, purpose, results and conclusions
- Do not use special characters that are not common to all fonts

Instructions for submission of abstracts

- Authors should send a copy of the abstract with their contact details via e-mail at: k.bisia@events.gr, writing on the subject: "3rd Lung Cancer Network"
- Abstracts sent by fax will not be accepted
- Authors must indicate their preferred choice of presentation (oral or poster). However, the Scientific Committee reserves the right to decide the final form of presentation
- Changes, additions or corrections will not be accepted after the submission of the abstract
- Abstracts that do not meet all the above requirements or are submitted after the deadline are not acceptable

The authors will be notified by October, 21st 2013 whether their abstract has been accepted and the form of presentation.

Information about the technical preparation of the poster will be posted on the websites www.events.gr and www.lungcancernetwork.eu

Abstract Deadline December 20th 2013

General Information

Organized by the

Oncology Center of Biomedical Education and Research
Oncology Unit GPP, Athens School of Medicine

Meeting website

www.lungcancernetwork.eu

Meeting Dates

31st January – 01st February 2014

Meeting Venue

Hilton Athens Hotel
46 Vassilissis Sofias Avenue
115 28 Athens, Greece
Tel.: 00 30 210 72 81 000



Conveniently situated in the heart of the city's commercial district, and just 25 minutes from the airport using the Athens Metro, the Hilton Athens' prime location and fabulous facilities make it the perfect spot for Athens meetings and exhibitions of all sizes.



The Meeting will take place at the "Hesperides" Hall.

The Meeting Secretariat will operate at the "Hesperides" foyer during the sessions.

Accommodation Cost

Limited number of rooms has been pre-booked at the Hilton Athens Hotel with special conditions for the participants.

Accommodation at (congress venue)	Single Room
Hilton Athens Hotel	340 € (<i>cost for 2 nights including breakfast and taxes</i>)

Extra night cost	for single room
Hilton Athens Hotel	170 € (<i>including breakfast and taxes</i>)

Option date for hotel bookings, November 18th 2013.

Registration Cost

Type of Registration	Cost
Doctors*	400€
Residents	150€
Medical students	150€
Nurses	100€

Registration cost includes:

- Admission to all sessions & exhibition area
- Meeting material
- Certificate of attendance
- Opening Ceremony & Welcome Reception
- Coffee breaks
- 1 lunch on February 1st 2014

* *ESMO & IASLC Members will receive a 20% discount.*

Please visit the meeting's official site to download the necessary forms.

Meeting's Secretariat



E.T.S. Events & Travel Solutions S.A.

El. Venizelou 154, 171 22 N. Smyrni - Athens, Greece

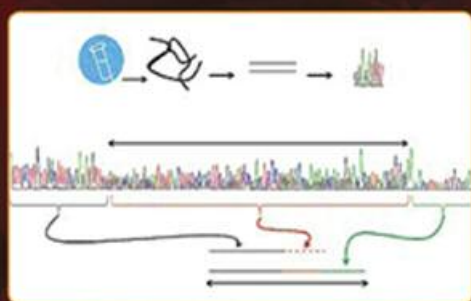
Tel.: +30 210 98 80 032 • Fax: +30 210 98 81 303

E-mail: ets@otenet.gr, ets@events.gr

Website: www.events.gr

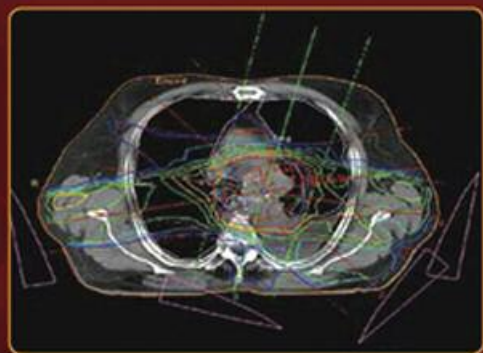
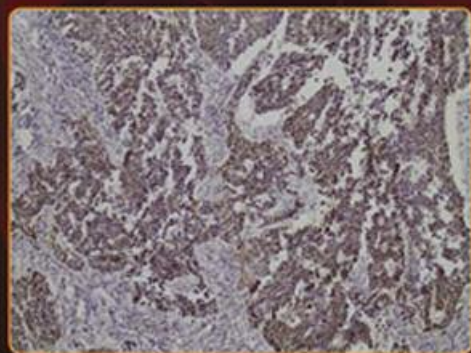
ΑΤΛΑΝΤΑΣ

ΟΓΚΟΛΟΓΙΑΣ ΘΩΡΑΚΑ



ΚΩΝΣΤΑΝΤΙΝΟΣ ΣΥΡΙΓΟΣ
ΓΙΑΝΝΗΣ ΓΚΙΟΖΟΣ
ΑΝΔΡΙΑΝΗ ΧΑΡΠΙΔΟΥ

Πρόλογος ALAN SANDLER



Ογκολογία Θώρακος: **Σύγχρονη Κλινικοεργαστηριακή** **Προσέγγιση και Έρευνα**

Διοργανωτής:

Ογκολογική Μονάδα, Γ' ΠΠ, Γ.Ν. «Η Σωτηρία»,
Ιατρική Σχολή Πανεπιστημίου Αθηνών

Υποψήφιοι:

- Πτυχιούχοι Τμημάτων Ιατρικής, Νοσηλευτικής, Βιολογικού, Φαρμακευτικού
- Ιατροί που διαγιγνώσκουν και θεραπεύουν ασθενείς με Καρκίνο Πνεύμονα:
Παθολόγοι-Ογκολόγοι, Ακτινοθεραπευτές, Πνευμονολόγοι, Θωρακοχειρουργοί,
Ψυχίατροι, Παθολογοανατόμοι

Οι διαλέξεις θα λαμβάνουν χώρα:

- στο Αμφιθέατρο της Ογκολογικής Μονάδας, Κτήριο Ζ, 2^{ος} όροφος, Γ.Ν. «Η Σωτηρία»
- κάθε 2^ο Σαββατοκύριακο, Παρασκευή 17:00-21:00 & Σάββατο 09:00-17:00

Θέματα Προγράμματος:

- Οδηγίες συγγραφής ιατρικών δημοσιεύσεων και ανακοινώσεων
- Εκπαίδευση στη σωστή παρουσίαση ενός επιστημονικού θέματος
- Βασικές αρχές βιοστατιστικής
- Μοριακά μονοπάτια
- Από το σύμπτωμα στη διάγνωση
- Συνδυαστικές θεραπείες καρκίνου πνεύμονα
- Επείγουσες καταστάσεις στην ογκολογία
- Βασικές αρχές κλινικών μελετών
- Υποστηρικτική και ανακουφιστική αγωγή
- Ανθρωπιστική ιατρική

Διάρκεια:

Οκτώβριος 2013 - Ιούνιος 2015

Δίδακτρα:

1.000 Ευρώ / εξάμηνο (συνολικά 4 εξάμηνα)

Περιορισμένος αριθμός υποτροφιών με σειρά επιτυχίας

(θα χορηγηθούν υποτροφίες με σειρά επιτυχίας στις εξετάσεις)

Πληροφορίες:

- Γραμματεία Εκπαίδευσης Ογκολογικής Μονάδας, κα. Ε. Μελισσαροπούλου,
τηλ.: 210 77 00 220, oncologysecr@med.uoa.gr, www.eoncology.eu
- Γραμματεία Μεταπτυχιακών Προγραμμάτων Ιατρικής Σχολής Αθηνών,
τηλ.: 210 74 62 032, 210 74 62 035, www.grammateia.med.uoa.gr



Meeting's Secretariat



E.T.S. Events & Travel Solutions S.A.

El. Venizelou 154 • 171 22 N. Smyrni • Tel.: +30 210 98 80 032 • Fax: +30 210 98 81 303
E-mail: ets@otenet.gr • ets@events.gr, Website: www.events.gr